

BUSHMEAD

SHAPED BY NATURE

Bushmead Display Village Guide



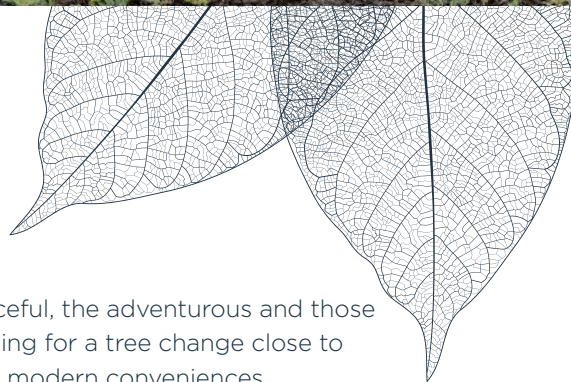
Modern living shaped by nature

If you love the peace and tranquility of the Australian bush, you'll love living in the environmentally sustainable community of Bushmead, just 16km from the Perth CBD, 8km from Kalamunda town centre and 5km from Midland.

Set amongst 185 hectares of pristine natural bushland, Bushmead has been shaped by nature to suit the

peaceful, the adventurous and those longing for a tree change close to life's modern conveniences.

With a variety of carefully-designed blocks surrounded by retained bushland, parks and recreational reserves, Bushmead is a truly unique setting for your modern, new home.



ASHGROVE ENTRANCE

CARPARK

SALES OFFICE

CARPARK

EDMONDTON PARADE

ROTTNEST STREET

ELLISON LANE

NORTH

blueprint
HOMES

DALECK
PIECES
HOMES

HomeGroup

ResiNorth
Group



plunkett
Homes

redink
HOMES

B1
HOMES



TREETOP PARK, BUSHMEAD SOUTH

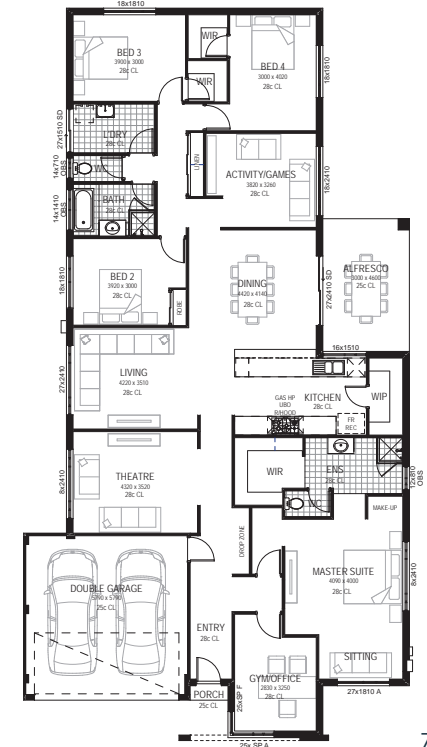


THE TERRARIUM

4  2  2 

Step into luxurious country living in our newest display home, where versatility meets sophistication. With a spacious indoor gym or office, an expansive master suite, featuring a sitting area, makeup stand, and a lavish ensuite with ample natural light. A hidden walk-in robe adds to the suite's allure.

Styled with a seamless flow between the home theatre room, living area, and kitchen which boasts a walk-in pantry and island bench, overlooking the dining space and alfresco area.



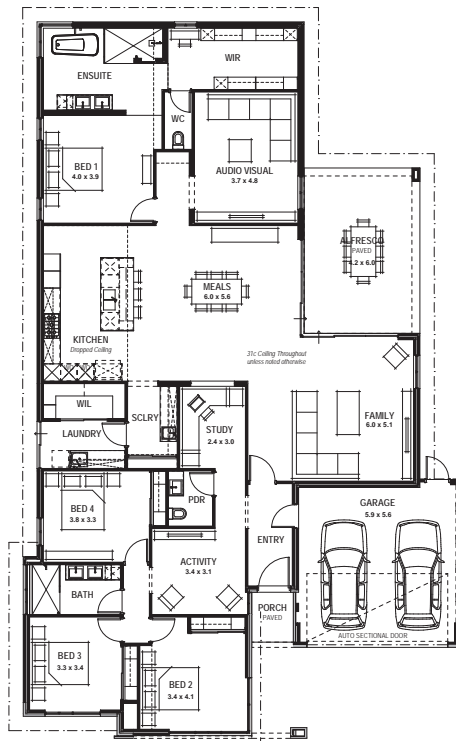


THE ROTTNEST



Designed for a minimum block width of 17m, The Rottnest is a spacious four-bedroom, two-bathroom home with a generous 328m² of interior living space, including the alfresco.

Integrating functionality and style, the kitchen and open-plan dining and family areas wrap around the alfresco area, creating a huge indoor-outdoor entertaining space. The master suite has a luxurious free-standing bath in the ensuite and a large walk-in robe. Add to this an activity room, private study and home theatre, and you have the perfect home for entertaining and family living.

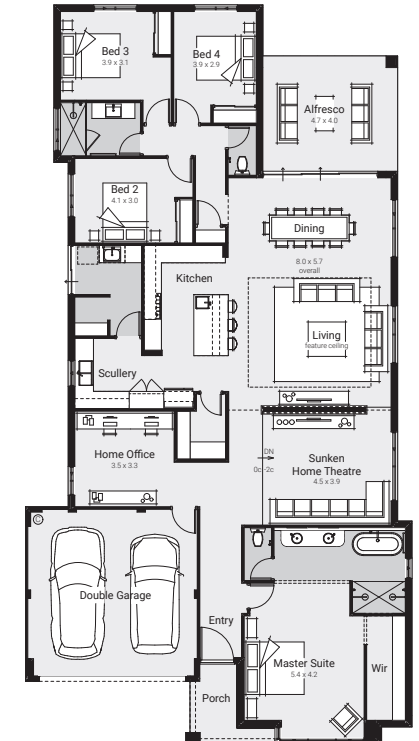


THE EASTON



The Easton is a testament to refined living, combining country design with the feel of a modern retreat.

At the front of the home is a private zone housing the home office and a sunken home theatre along with a luxurious master suite, providing a serene retreat for parents. The designer kitchen and the spacious open-plan living and dining area merge seamlessly with the alfresco, inviting in the breeze. Towards the rear, three bedrooms and the family bathroom offer a private sanctuary for family or guests.





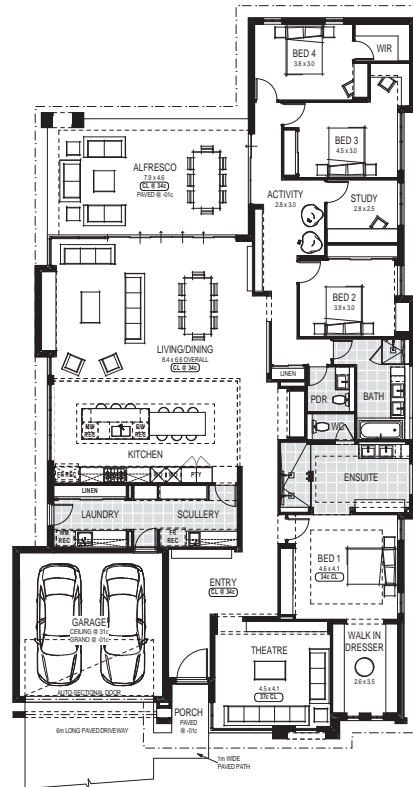
ST ANDREWS PLATINUM



4 2 2

This home is tailor-made for growing families, with a floorplan giving every member of the family the space they need.

Parents have their own space off the entry, with a spacious master suite and a home theatre. Everyone comes together in the heart of the home, where the open-plan kitchen - with separate scullery - has an extra-long breakfast bar for communal gatherings. The dining area and family room extend to a huge alfresco, while at the rear are three generous bedrooms, a study, the family bathroom and guest powder room.

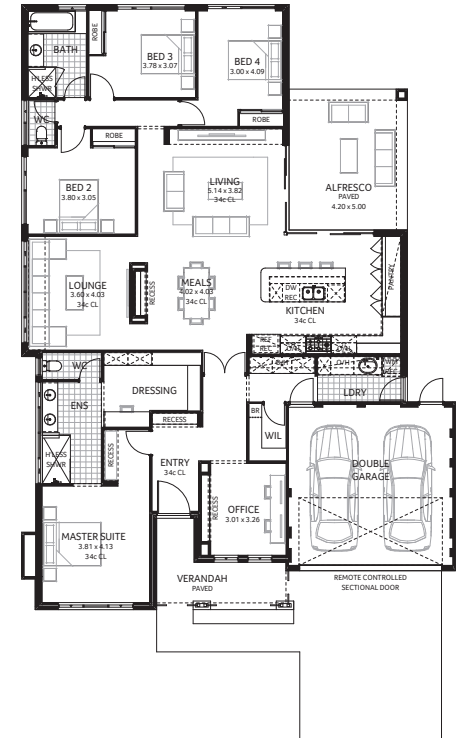


THE KINGSTOWN



4 2 2

Combining traditional Federation style with contemporary living, The Kingstown is a classic design perfect for today's families. Thoughtfully divided into two zones, the home provides both private sanctuary and shared spaces. Leading off the entry is a home office and a huge master suite with its own ensuite and dressing room. At the heart of the home, a spacious open-plan kitchen, dining and living area opens to a big alfresco, with a separate lounge for family movie nights. Three bedrooms and the family bathroom complete the family-friendly layout.





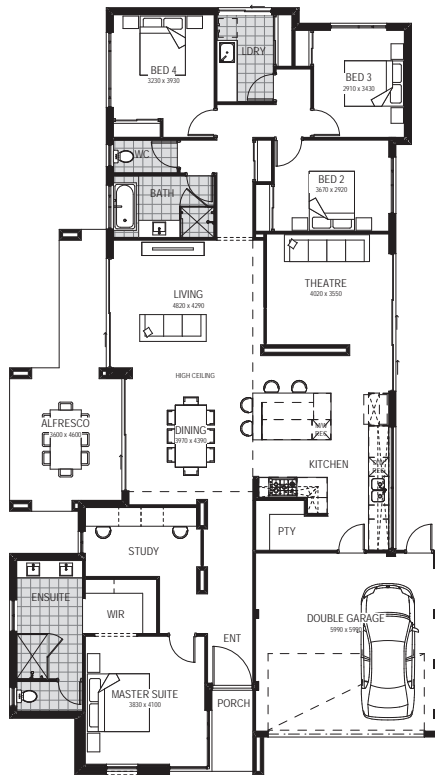
THE KARIJINI

4 2 2

Explore The Karijini Display, a captivating 4-bedroom, 2-bathroom home designed to showcase an eclectic mix of contemporary design with sleek, unique finishes and materials.

This bold, modern home centres around an open plan living space, designed to be both purposeful and spacious. The Karijini offers the perfect balance, blending the comfort of private retreats with stylish spaces ideal for entertaining.

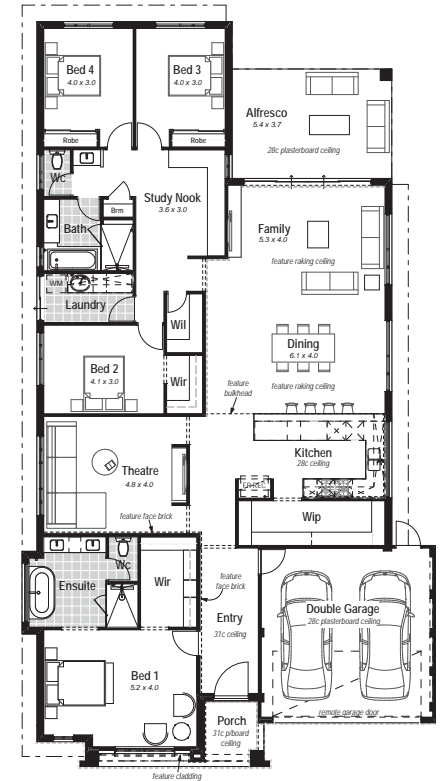
Features acrylic render to entire home, feature face brockwork and so much more!

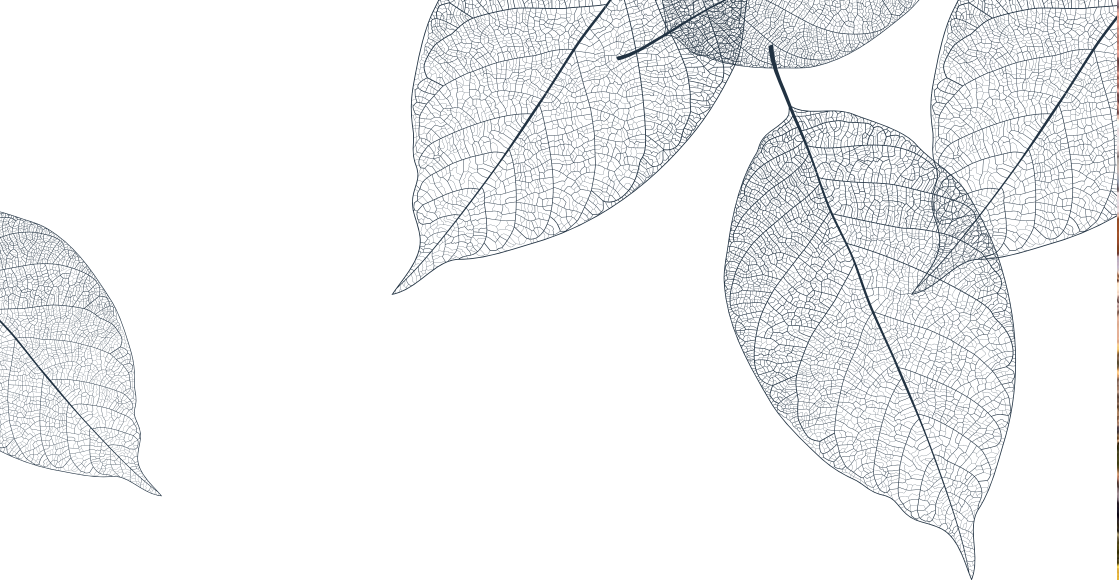


THE GLENBROOK

4 2 2

From the moment you enter this stunning new home, you'll be greeted with opulence via the wide entry hallway, leading to a massive open plan family/dining room creating a feeling of grandeur and elegance. The kitchen has been zoned for those who love to entertain along with one of the biggest pantry areas you will find in any home on display. Four bedrooms, two bathrooms, a theatre room, along with a designated study area located off the rear bedrooms, you will simply fall in love with this modern classic.





About Cedar Woods

At Cedar Woods we strive to create quality homes, workplaces and communities that last. Meaningful places that inspire connection and help us grow. Where relationships count and the needs of customers are met. It's an approach grounded in understanding our customers and designing solutions that make their lives better. From green, crafted parklands that connect us with our environment, to carefully considered designs that simplify the task of living.

For over 30 years we have worked hard to think ahead, evolving our designs to always respond to the changing world in which we live.

We understand that purchasing a new property is a big decision in our lives and it's one we take very seriously. It means that at Cedar Woods we think about the details and deliver on our word, always putting our customers first.

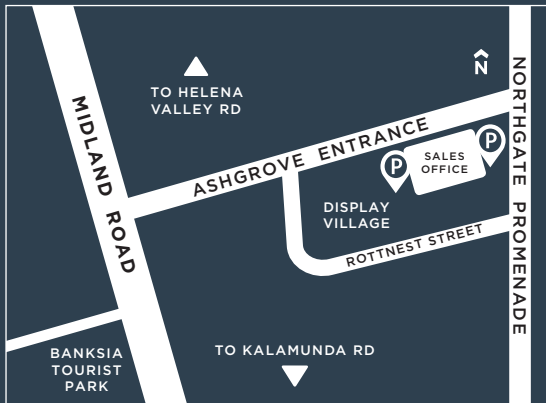
In fact, everything we do from creating new homes to launching and nurturing new communities where people live, work and play, it is really about improving the lives of our customers, giving them a solid and inspiring foundation, now and into the future.

Because at Cedar Woods we know we are developing tomorrow, today.



cedarwoods.com.au





SALES OFFICE:

Ashgrove Entrance, (Cnr Midland Road),
Bushmead WA 6055

bushmead.com.au

